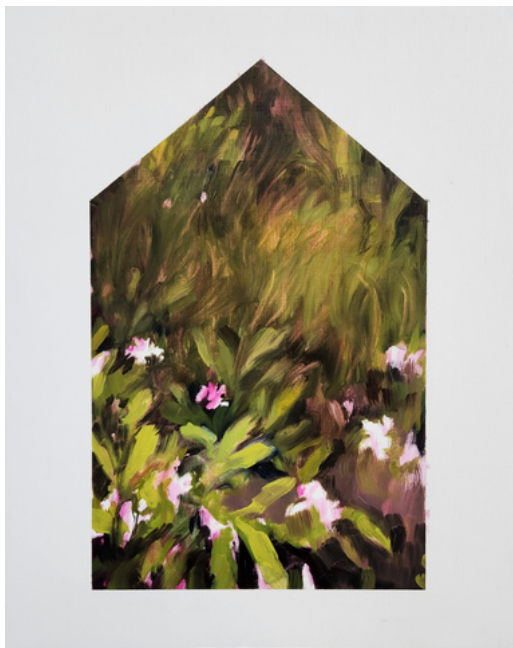


Half Wind Half Still

July 12 - July 25, 2025

13 Grattan St, #402

Brooklyn, New York



Small Gardens, Dottie Lo Bue, 2024

Exhibit Artists

Ziyan Bai
Celine Browning
Dottie Lo Bue
Shaohan Fang
Goujirou
Alexa Huang
Ally Yanxiu Luo
Yerang Moon
Dani Sujin
Xuecong Wang

Curators

Adela Sun
Sumi Zhang
Reena Zhang

New York, NY — A Space is pleased to present ***Half Wind Half Still***, a group exhibition exploring transformation through openness. At its core is the concept of the “unfinished”—not as a flaw, but as process, tension, and generative strategy. In a world where certainty feels elusive, the works in this exhibition remain in flux: open, unfinalized, and alive with the possibility of change.

Dottie Lo Bue’s *Small Gardens* float between worldbuilding and unraveling, offering painted landscapes that invite close, quiet observation. Shaohan Fang’s photographic series *Portrait of a Family* stages fictional reunions to explore familial absence and the lingering desire for connection. In *Paltry Fettle IV*, Céline Browning transforms her child’s outgrown clothes and postpartum hair into thread-bound sculptures that speak to the invisible labor of caregiving. Ziyan Bai’s stitched work, *Cosmos*, maps memory through drifting birds, shadowed trees, and shifting topographies—mythic symbols rendered in thread on muslin.

Other works move between body and environment, permanence and erosion. Yerang Moon’s ceramic sculpture, *Vault*, suggests a body in flux—glazed, swollen, and scratched by change. Dani Sujin Lee’s *Loss of Words* uses porous ceramic vessels to hold the tension between language, memory, and time. In *Untitled (Ripple Study)*, Ally Yanxiu Luo presents a trembling hand sculpture that ripples water in response to movement, tracing unseen systems of cause and effect. Goujirou’s *Ghost Production* features bleached human hair forms that evoke ghostly remnants of care and utility. In *Because I Might Not See No. 5*, Xuecong Wang captures the delicate balance of solitude and intimacy through a table setting from a date, rendered in watercolor. Alexa Huang’s *Self* embraces erosion and instability—her paintings, made from marble dust and pigment, serve as meditations on materiality, memory, and transformation.



Together, the works in *Half Wind Half Still* ask: What if incompleteness is the most honest response to our time? Through fracture, slowness, and attentiveness, the artists embrace becoming as a radical creative act, offering not resolution, but the possibility to keep sensing, making, and imagining.

A Space, founded in 2024, is a pioneering incubator dedicated to discovering and supporting emerging artists in the contemporary art world. As a forward-thinking platform, we provide young talents with the space and opportunities to experiment, grow, and connect with a wider audience. Through collaborations with visionary artists and brands, we curate cutting-edge exhibitions, immersive art events, and dynamic cultural experiences that push the boundaries of artistic expression. More than just a gallery, A Space Gallery is a hub for creativity, dialogue, and innovation, shaping the future of contemporary art.



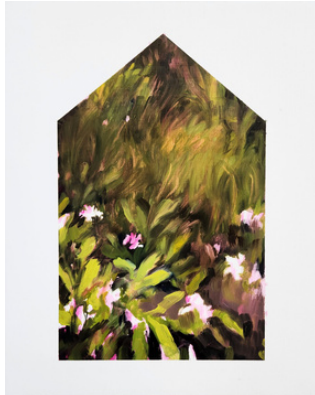
Ziyan Bai
Cosmos
2025
Muslin and thread
10 x 15 in

\$660



Celine Browning
Paltry Fettle IV
2025
Plywood, map pins,
clothing, drawings in
thread
20 L x 19 H x 1.5 D in

\$650



Dottie Lo Bue
Small Gardens
2024
Oil on Panel
20 x 16 in

\$900



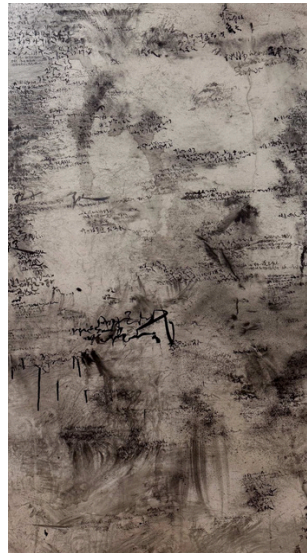
Shaohan Fang
Portrait of a family
2024
30 x 20 in

\$800



Goujirou
Ghost Production
2025
17 x 8.6 x 18 in

\$2200



Alexa Huang
Self
2025
Chinese Ink and Marble
Dust on Prepared board
3 x 6 foot

\$1500



Ally Yanxiu Luo
Untitled (Ripple Study)
2025
Plaster, rope, wax, water,
metal joints, springs
180 x 70 cm

NFS



Yerang Moon
Vault
2025
Ceramic
16 x 12 x 11"

\$11000(Price on request)



Dani Sujin
Loss of Words (NFS)
2025
white stoneware,
underglaze paint
5.5 x 6 in



Xuecong Wang
*Because I Might Not See
No. 5 (NFS)*
2025
Watercolor on paper
mounted on wood panel
6 x 6 in